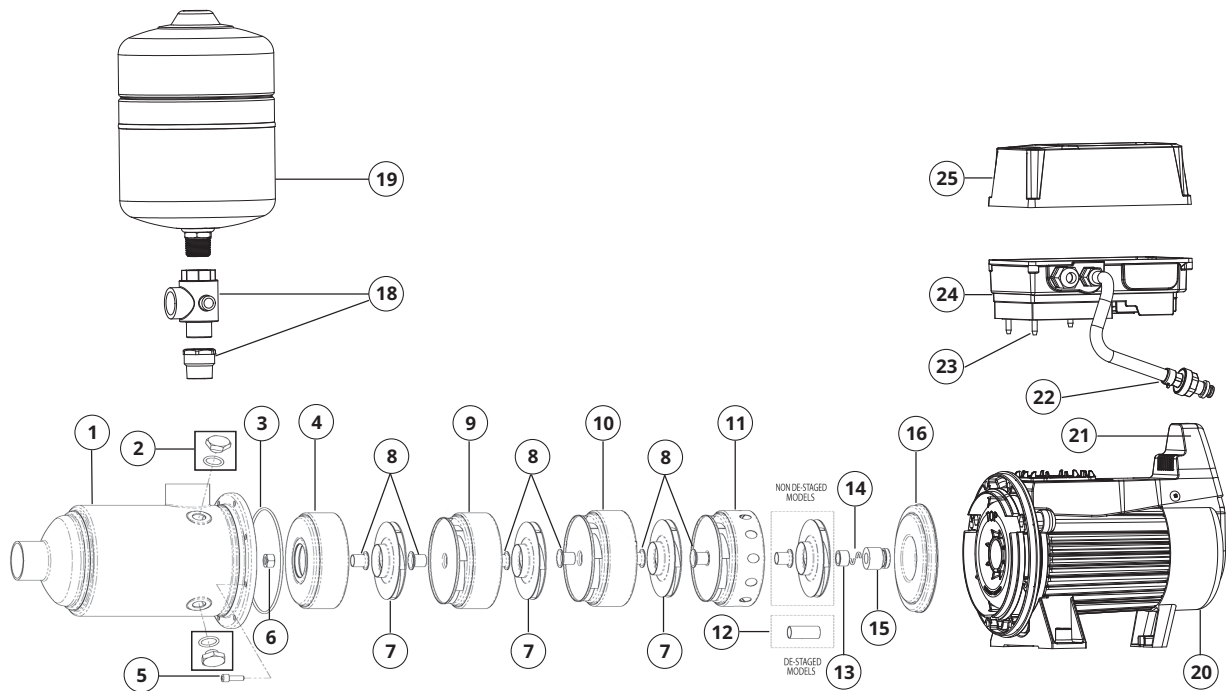


DynaDrive 6 stages	DD60-10(CE)	DD60-10NPT
DynaDrive 5 stages	DD90-11(CE)	DD90-11NPT

Notes: A. 2nd Stage body comes with air valve assy which can be retrofitted onto models without the air valve. Subsequent stage bodies have the air hole which can also be retrofitted onto models that do not have the air valve already fitted.
 B. Washer cup part number 13666 - quantity of 1 required for HM60 & HM90 models (fitted to drive end side only).
 C. Tank is optional extra for CE and NPT model variants



ITEM	NOTES	DESCRIPTION	QTY REQ'D	PART NO.
1		Casing - Front DD60-10(CE), DD90-11(CE)	1	13656-6SP
1		Casing - Front DD60-10NPT, DD90-11NPT	1	13656-6USA
2		Plug & O-ring - 1/4" BSP Vertical	3	400577SP
3		O-ring - Casing	1	44853
4		Stage body - 1st stage	1	13661-1
5		Screw - Casing (pk8)	1	S34M0616*8
6		Nut - Casing 6mm s/s	1	N33M10*6
6		Nut - Half	1	401573
7		Impeller DD60 series	As required	13678
7		Impeller DD90 series	As required	13676
8		Spacer - Impeller	As required	13665
9	A	Stage Body - 2nd stage with valve assy	1	32912
10		Stage body - Inner stages	As required	13662-2
11		Stage body - Final	1	13663
12		Spacer - Destage	1	13696-1
13	B	Washer - Cup	As required	13666
14		Clip spring	2	13667
15		Seal - Mechanical	1	400558SP
16		Backplate	1	13660
18		Outlet Assembly DD60-10(CE), DD90-11(CE)	1	33080
18		Outlet Assembly DD60-10NPT, DD90-11NPT	1	33080NPT
19		8L NPT Pressure Tank DD60-10NPT, DD90-11NPT	1	33076NPT
19		8L pressure tank DD60-10(CE), DD90-11(CE)	1	24008P
20		Fan cowl DD60-10(CE), DD90-11(CE)	1	11150-40M
20		Fan cowl DD60-10NPT, DD90-11NPT	1	11150-40MNPT
21		VSD adaptor	1	16098
22		Pressure transducer & loom	1	RECH092SP
23		O-ring to suit adaptor VSD	1	402442
24		DynaDrive power module DD60-10(CE), DD90-11(CE)	1	RECH092345SP
24		DynaDrive power module DD60-10NPT, DD90-11NPT	1	RECH102
25		DynaDrive control module DD60-10(CE), DD90-11(CE)	1	RECH091SP
25		DynaDrive control module DD60-10NPT, DD90-11NPT	1	RECH103
-		Slinger - Water	1	13648